

Product Specification

medex

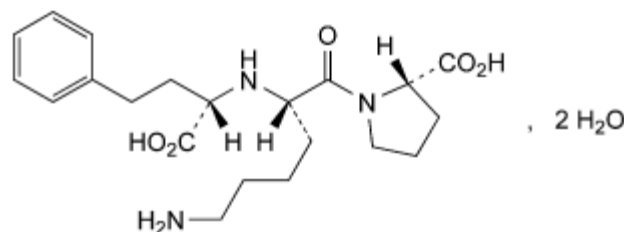
PHARMACEUTICALS · CHEMICALS

A HOBART COMPANY

PRODUCT Lisinopril Dihydrate EP/BP

CAS no. [83915-83-7]

$C_{21}H_{31}N_3O_5 \cdot 2H_2O$



CHARACTERISTICS White or almost white, crystalline powder.
Soluble in water, practically insoluble in anhydrous ethanol and in heptane.

TEST	SPECIFICATION
Content	98.5% - 101.5% of (anhydrous substance)
Identification	Complies with EP/BP tests
Related substances	Impurity A,E,F Maximum 0.2% (each) Impurity G Maximum 0.15% Unspecified impurities Maximum 0.10% (each) Total impurities Maximum 0.5%
Water	8.0% to 9.5%
Sulphated ash	Maximum 0.1%

STORAGE Should be stored in an airtight container in a cool, dry place and protected from light.

PRODUCT NAMED ABOVE COMPLIES WITH THE SPECIFICATION OF THE EP/BP.



Lisinopril Dihydrate EP/BP